

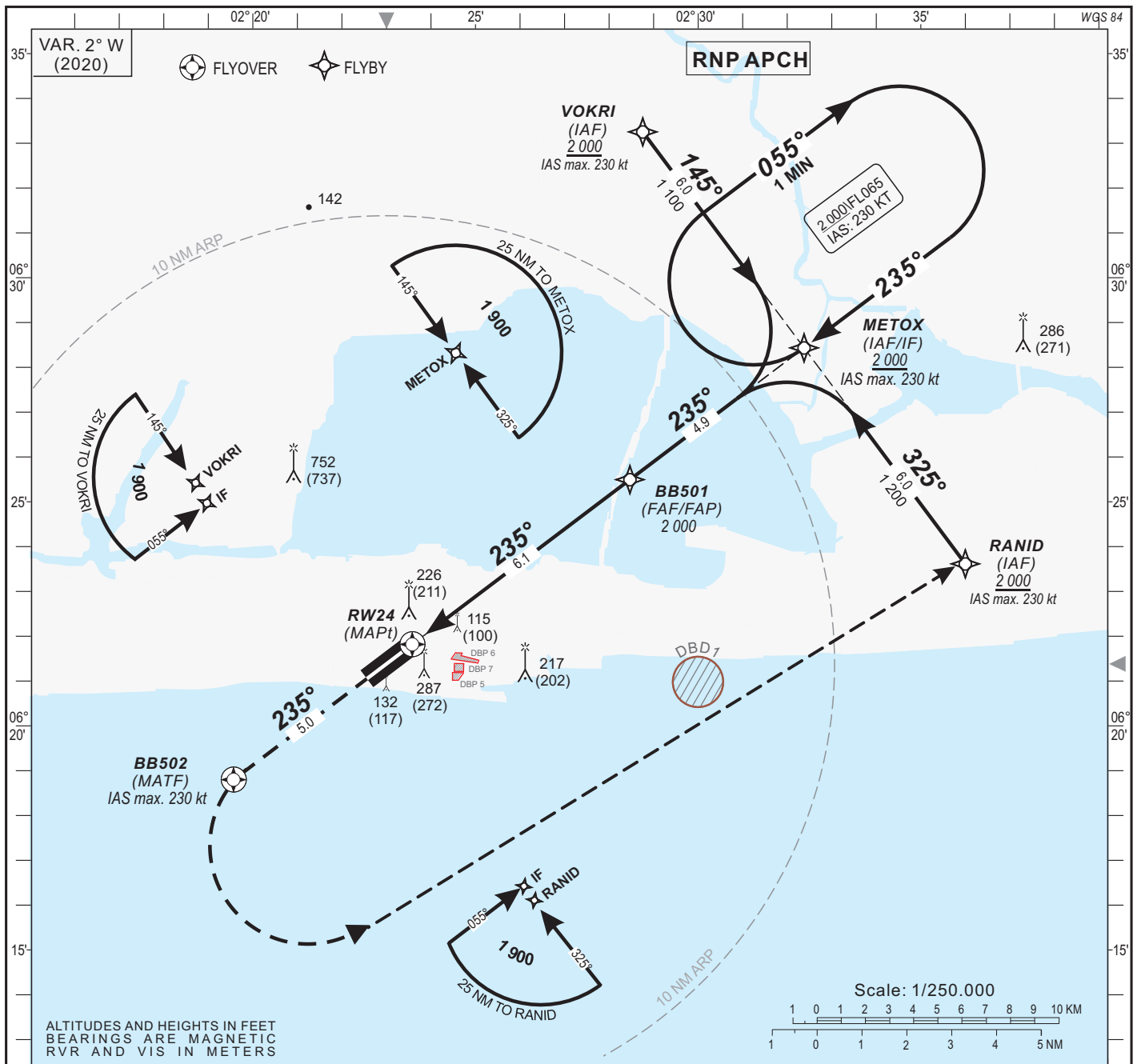
**INSTRUMENT APPROACH CHART**  
Categories A-B-C-D

AERODROME ELEV: 19  
THR RWY 24 ELEV: 15  
HEIGHTS RELATED TO THR RWY 24 ELEV

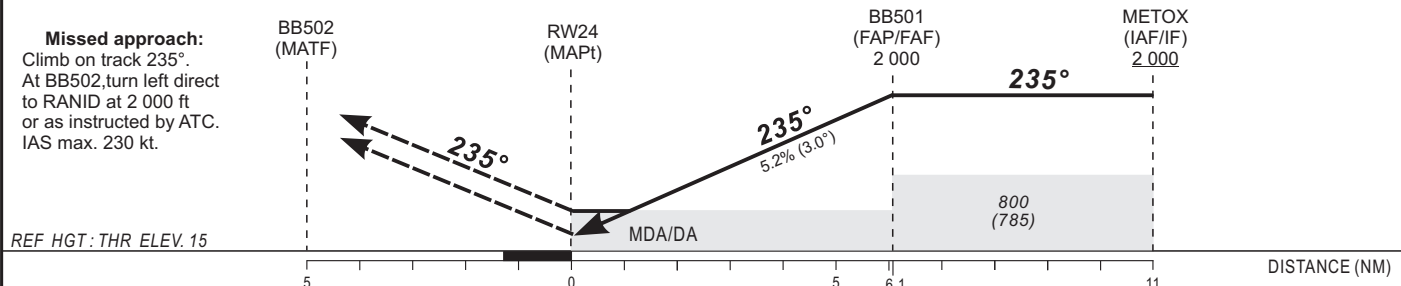
**APP** : Cotonou Approach 125.9  
**TWR** : Cotonou Tower 118.7

**COTONOU / Cardinal B. Gantin (DBBB)**

RNP RWY 24



Distance to THR 24 (NM)	RW24	2	3	4	5	6	FAF	TRANSITION ALTITUDE : 3 100
Altitude (ft)		705	1 020	1 340	1 660	1 975	2 000	



CAT	LNAV/VNAV				LNAV				CIRCLING (3)				RVR for take-off: CAT. A - B - C - D : 400					
	OCA (OCH)	DA	DH	RVR(1)	RVR(2)	OCA (OCH)	MDA	MDH	RVR(1)	RVR(2)	OCA (OCH)	MDA	MDH	VIS	Timing FAF / THR 6.1 NM			
A	341 (326)	350 (330)		800	1200	471 (456)	480 (460)		1000	1500	582 (563)	590 (570)		1500	KT	MIN SEC	KT	MIN SEC
B	354 (339)	360 (340)		800	1200	471 (456)	480 (460)		1200	1500	582 (563)	590 (570)		1600	90	4 Min 04	140	2 Min 37
C	369 (354)	370 (360)		800	1200	471 (456)	480 (460)		1200	2000	681 (662)	690 (670)		2400	100	3 Min 40	150	2 Min 26
D	396 (381)	400 (390)		800	1200	471 (456)	480 (460)		1600	2000	1145 (1126)	1150 (1130)		3600	110	3 Min 20	160	2 Min 17
															120	3 Min 03	170	2 Min 09
															130	2 Min 49	180	2 Min 02

**Notes:**  
- (1) With approach lights - (2) Without approach lights - RDH: 15 m  
- (3) Daytime only. OCH and MDH AAL - Minimum temperature: 10°